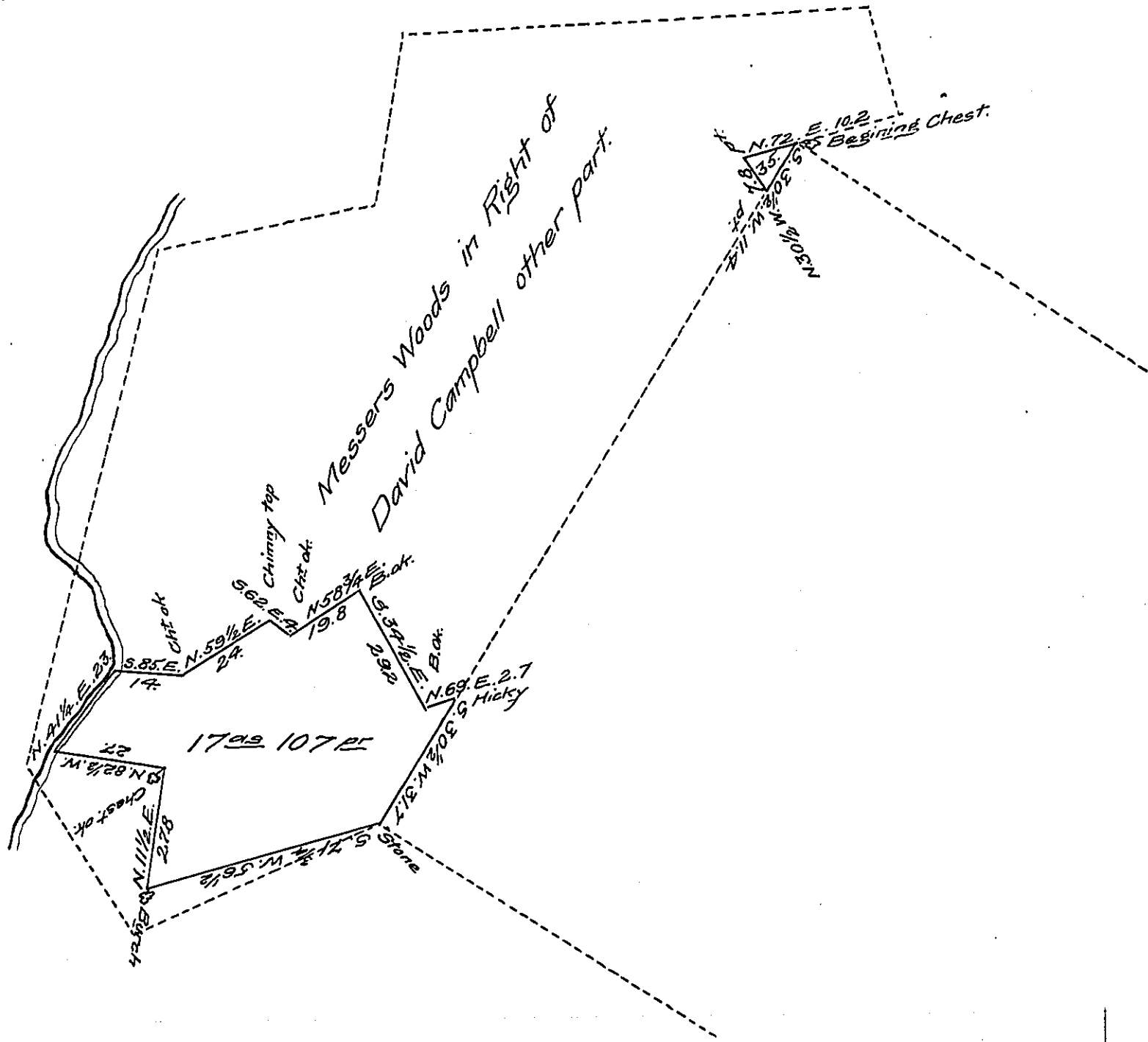


FORM No 1.



The above two Draughts Made by the black lines are parts of 10.6 acres of Land in Colerain township Lancaster County, granted to David Campbell by Warrant dated the 12th of April 1748. The small piece on the East at the beginning Chest contains 35 perches & the Usual Allowance, and the piece on the West contains 17⁰⁰ 107⁰⁰ and the Usual Allowance of Six per Ct for Roads &c. Surveyed for Junias Marshall, the 11th day of June 1840.

By James Calwell D.S.

To Jacob Sallade Esq^r }
S. G. Penn^a }

+ 14" Ap^t

IN TESTIMONY that the above is a copy of the original remaining on file in the Department of Internal Affairs of Pennsylvania, made conformably to an Act of Assembly approved the 16th day of February, 1833, I have hereunto set my Hand and caused the Seal of said Department to be affixed at Harrisburg, this ninth day of December 1907.

Henry Howell
Secretary of Internal Affairs.